



Plus+3

**"Thung" transforming**  
unlocking possibilities of agriculture. Linking the network of farmers together and creating a stronger network to build a big family farm. pathway space create with widely of identity pattern in different country reminding to cooperation.

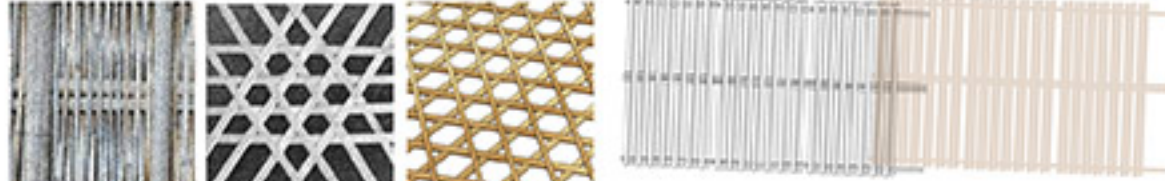


Plus+2

**Learn-Exchange-Relay**  
between culture knowledge from older and new innovation from younger, programming to collaborate different generation farming not only to exchange but to relay culture spirit generation to generation.

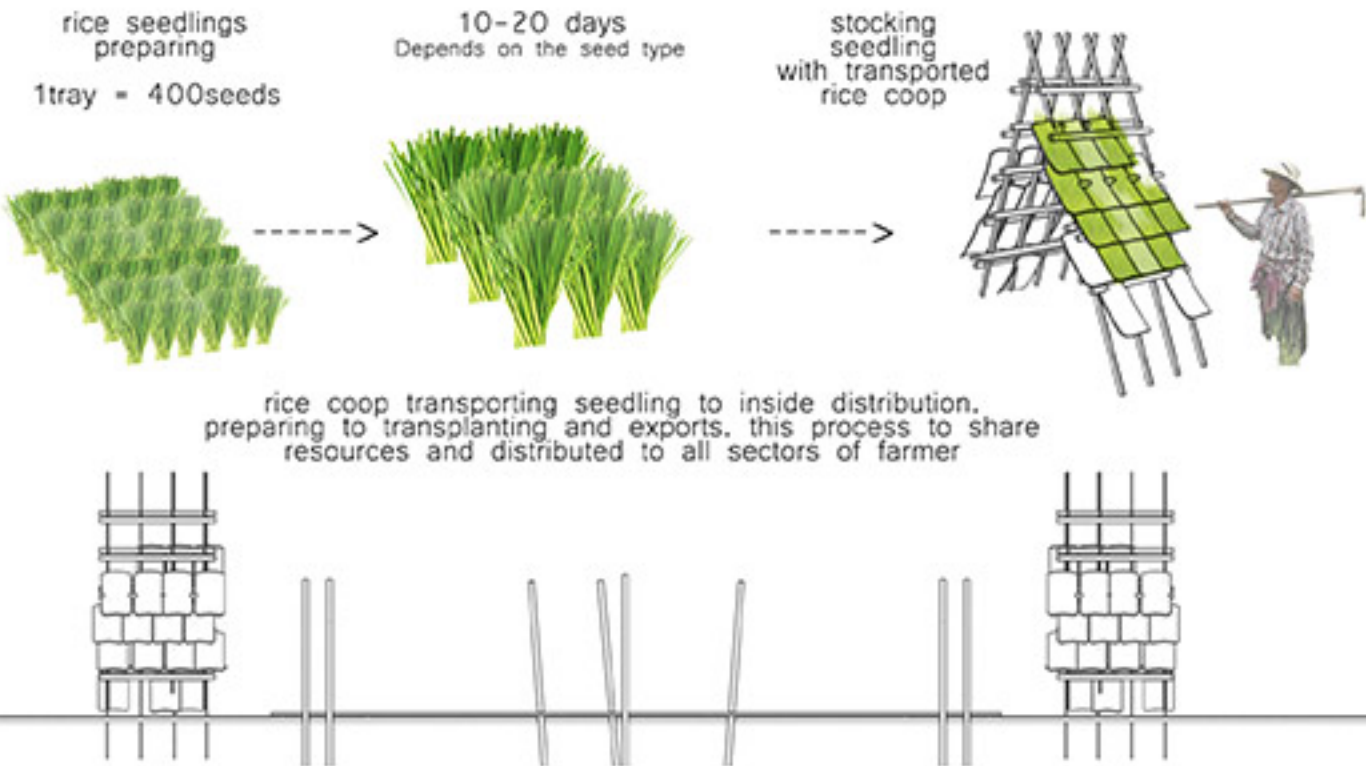
#### concept of weaving

weaving is process hand-craft crated from the collaboration with rural community. To create design project with local people not only designer.



culture weaving pattern develop to - roof cover - design facade

Projects that are friendly to the community and environment. Designs that take into consideration lifestyle, growth, change And things that remain. The smell of rural life in areas with Thai agricultural innovation reflected this field Represents true sustainability.



#### Rice seedlings

create rice seedling machines to exports for farmers or another districts where want or lack off. Design seedlings transported blend in with rural traditional culture move the seedlings to the inside of the export distribution center



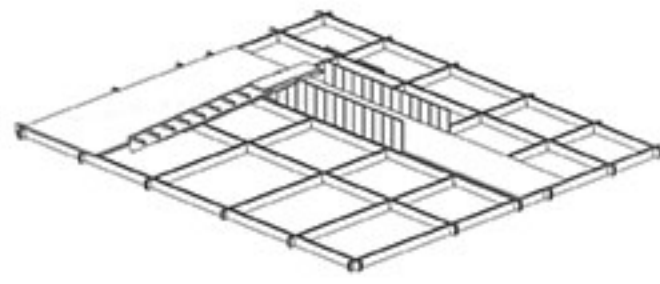
Plus+1

**"Thung" origins**  
Develop areas and contexts from rice cottage. Designing space relaxation for farmers and also integrating heritage with innovation. To the center for rice seedling exports for agricultural project groups and areas. Friendly area for people of all ages. And linking way connecting to the villages and surrounding places.

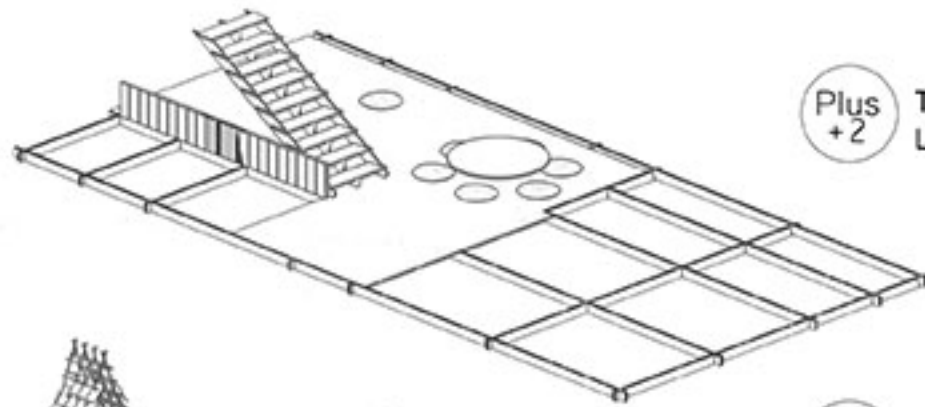




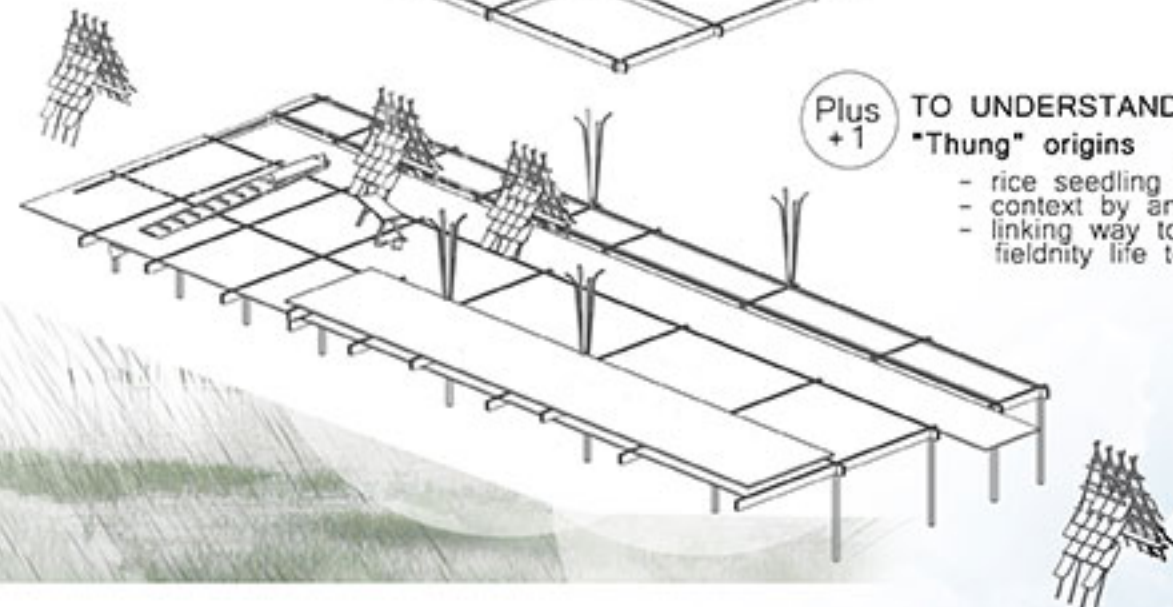
Plus +4  
TO SAVE  
Heart of field  
- observatory  
- drones controller



Plus +3  
TO APPROACHES  
"Thung" transforming  
- digital innovations transforming in this tower  
- unlocking another part in agriculture



Plus +2  
TO LEARN  
Learn-Exchange-Relay  
- generation to generation  
- heritage culture from old innovation from new



Plus +1  
TO UNDERSTAND  
"Thung" origins  
- rice seedling distribution  
- context by ancient cottage  
- linking way to another field life tower

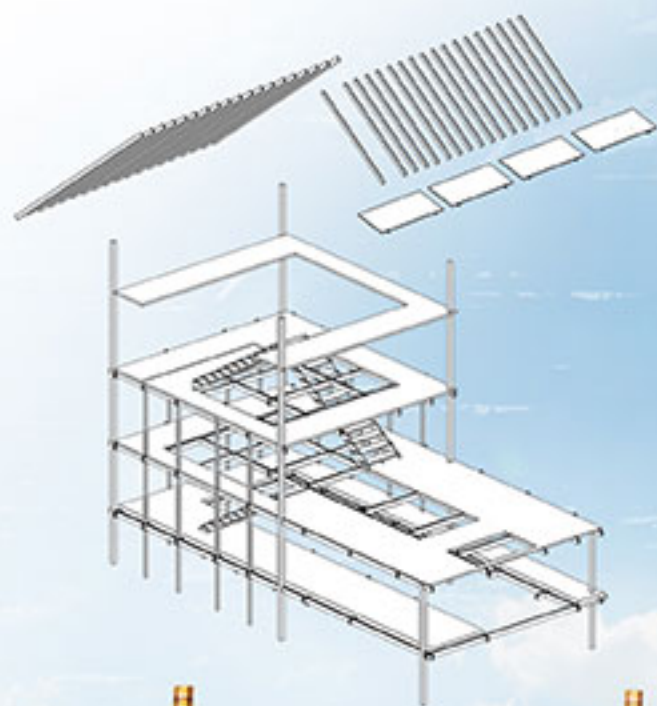
## concept

ทุ่งนา - rice field  
ทวีคูณ - increase multiplier plus\*

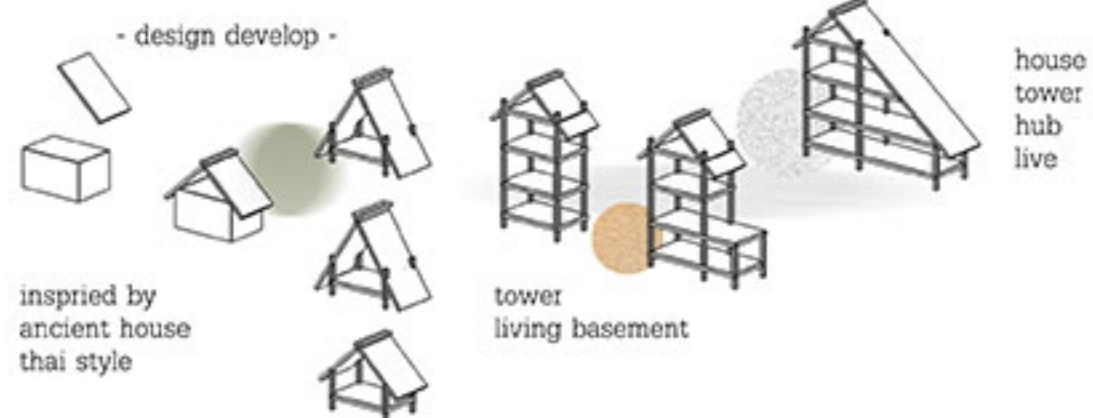


"Enhance the quality of life, experience, spirit, new culture along with new innovations increase and multiplier floor like in this project."

ทท



- design develop -



inspired by ancient house thai style

tower living basement

house tower hub live



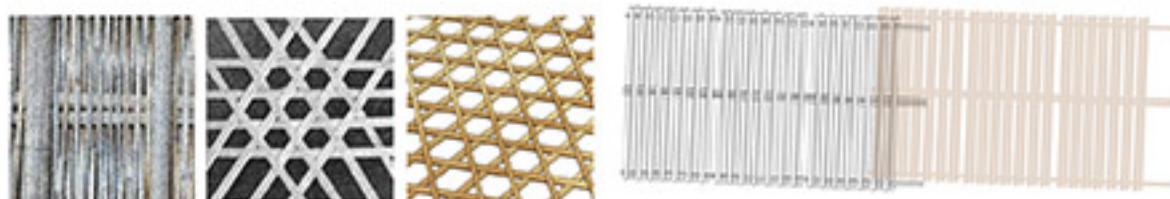


**"Thung" transforming**  
unlocking possibilities of agriculture. Linking the network of farmers together and creating a stronger network to build a big family farm. pathway space create with widely of identity pattern in different country reminding to cooperation.



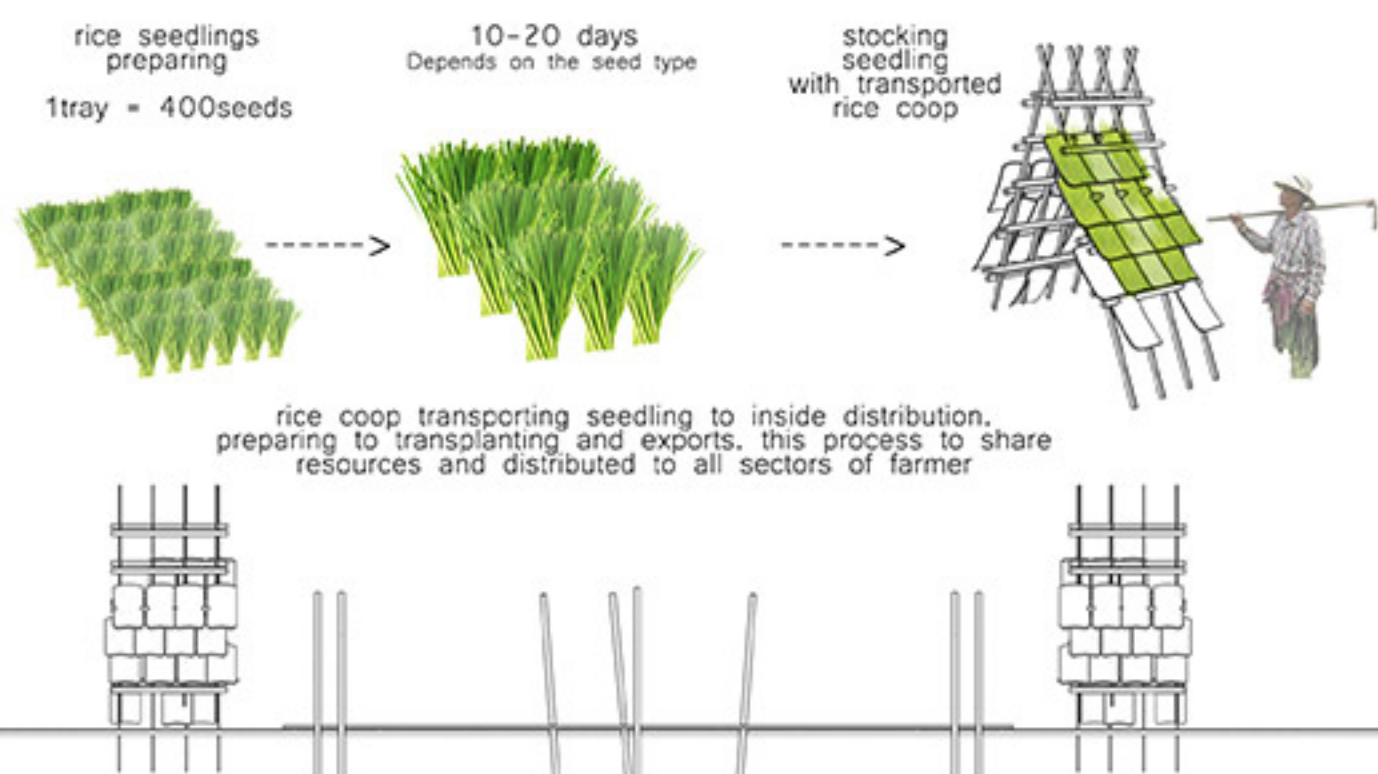
**Learn-Exchange-Relay**  
between culture knowledge from older and new innovation from younger, programming to collaborate different generation farming not only to exchange but to relay culture spirit generation to generation.

**concept of weaving**  
weaving is process hand-craft crated from the collaboration with rural community. To create design project with local people not only designer.



culture weaving pattern      develop to - roof cover      - design facade

Projects that are friendly to the community and environment. Designs that take into consideration lifestyle, growth, change And things that remain. The smell of rural life in areas with Thai agricultural innovation reflected this field Represents true sustainability.



Rice seedlings

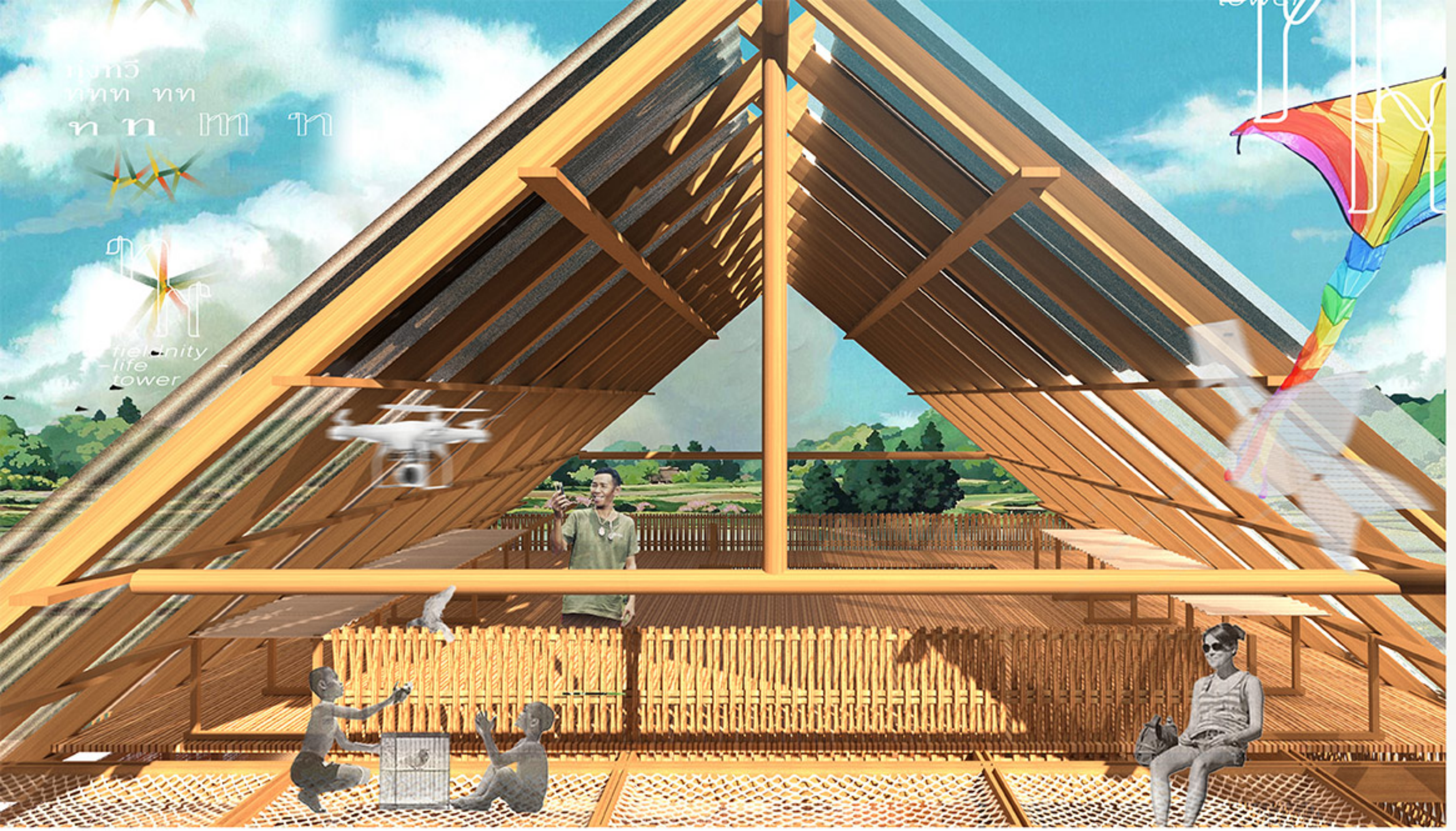
create rice seedling machines to exports for farmers or another districts where want or lack off. Design seedlings transported blend in with rural traditional culture move the seedlings to the inside of the export distribution center



Plus+1

**"Thung" origins**  
Develop areas and contexts from rice cottage. Designing space relaxation for farmers and also integrating heritage with innovation. To the center for rice seedling exports for agricultural project groups and areas. Friendly area for people of all ages. And linking way connecting to the villages and surrounding places.





- NIPPON PRODUCT -

triple shield  
NIPPON PAINT  
JESTER YELLOW  
CODE : JC 2050 A

triple shield  
NIPPON PAINT  
BLUE FLIPPERS  
CODE : PB 1451 D

triple shield  
NIPPON PAINT  
LIME TIME  
CODE : BG 1673 A

triple shield  
NIPPON PAINT  
DIVA  
CODE : R 1267 A

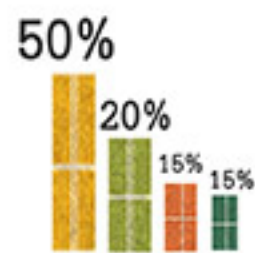
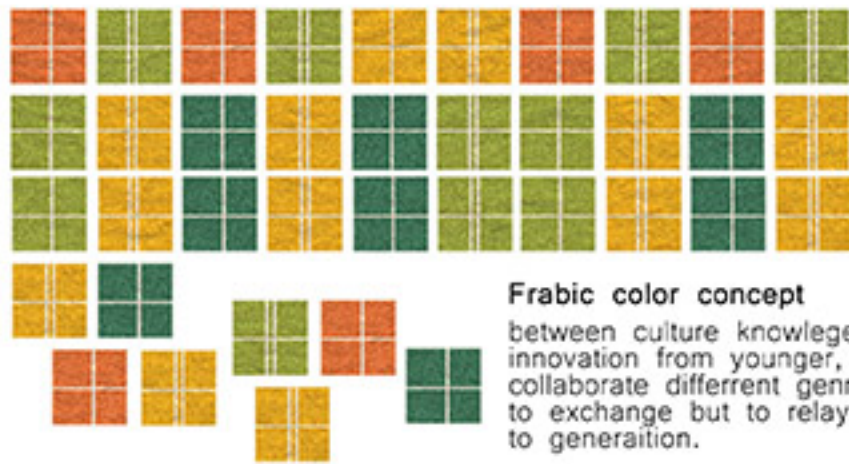


#### Traditional living

between culture knowledge  
from older and new  
innovation from younger,  
programming to collaborate  
different generation

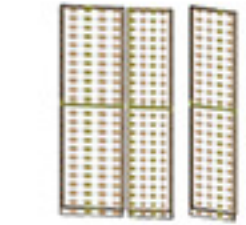


traditional pattern



#### Fabric color concept

between culture knowledge from older and new  
innovation from younger, programming to  
collaborate different generation farming not only  
to exchange but to relay culture spirit generation  
to generation.



#### symbols colors in structure



#### Observatory and Heart of field

Conserving Tung Thawi or plus4 is like the heart of the field. Adding  
observatory and Drones controlling. This floor represents to next  
generation to preserve all things their parents build. Is a public relations  
for the village And secure Along with being a beautiful viewpoint of this  
field as well

joint together by unique  
wood jointing technique.

Temporary structure or  
household Binder

panel window

louver window

Infrastructure color remind symbols

