

BANGKOK MEMORIAL BRIDGE MUSEUM



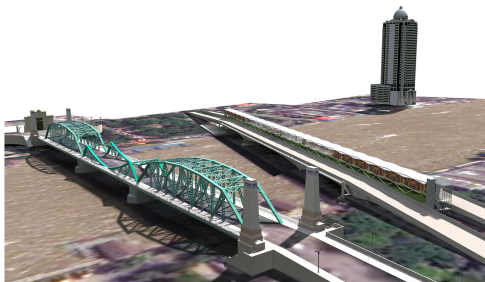
The beauty of the river



The lack of pedestrian bridge



The railway is between Phra Pok Klao Bridge. The size of the railway is 9 X 285 metres.



Design Statement

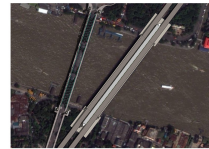
Chaopraya River runs through Bangkok divided the city into two sides. There are many beautiful places along the river. To appreciate the beauty of the river people have to walk over the bridge, but the walkway of the bridges in Bangkok are very narrow. Bangkok needs a pedestrian bridge to be a landmark and a scenic point for tourist.

At Phra Pok Klao Bridge there is an unfinished railway across the Chaopraya River which is the part of the project called Lavalin Skytrain in 1979. The project was fail due to the economy crisis. This site is interesting because it nears the Memorial Bridge and there are many tourist places in Rattanakosin Island, the historic center of Bangkok. Under the Phra Pok Klao Bridge, There are two small parks at the end of each side of the river. The design creates a long building over the existing structure, connected each sides of the river together. The functions of the building are museum which display history and interesting stories about Memorial Bridge, public library, coffee shop and panoramic view point of the river.

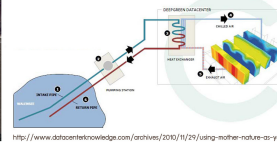
Green Design

- The reuse of old railway concrete structure will save the material for build the new bridge.
- The design uses steel structure which can be recycled.
- Air conditioning system uses river as a heat sink which save energy and have high efficient.

Layout Plan



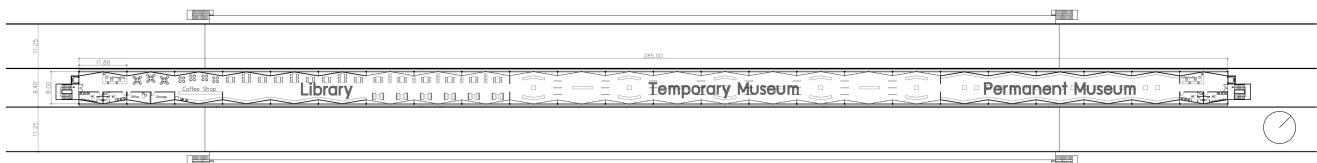
Example of cooling system from the DeepGreen data center in Switzerland, which taps a nearby lake for chilled water



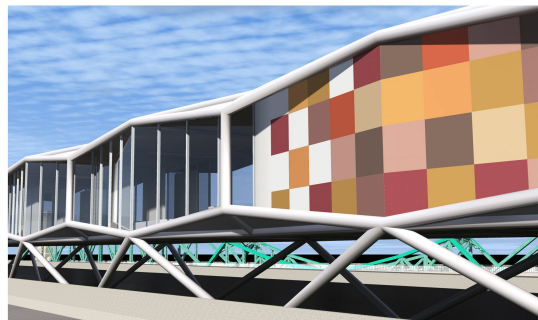
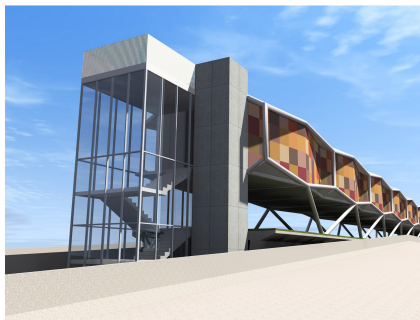
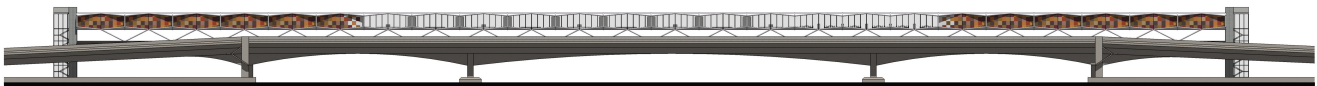
Access from Thonburi side.



Plan

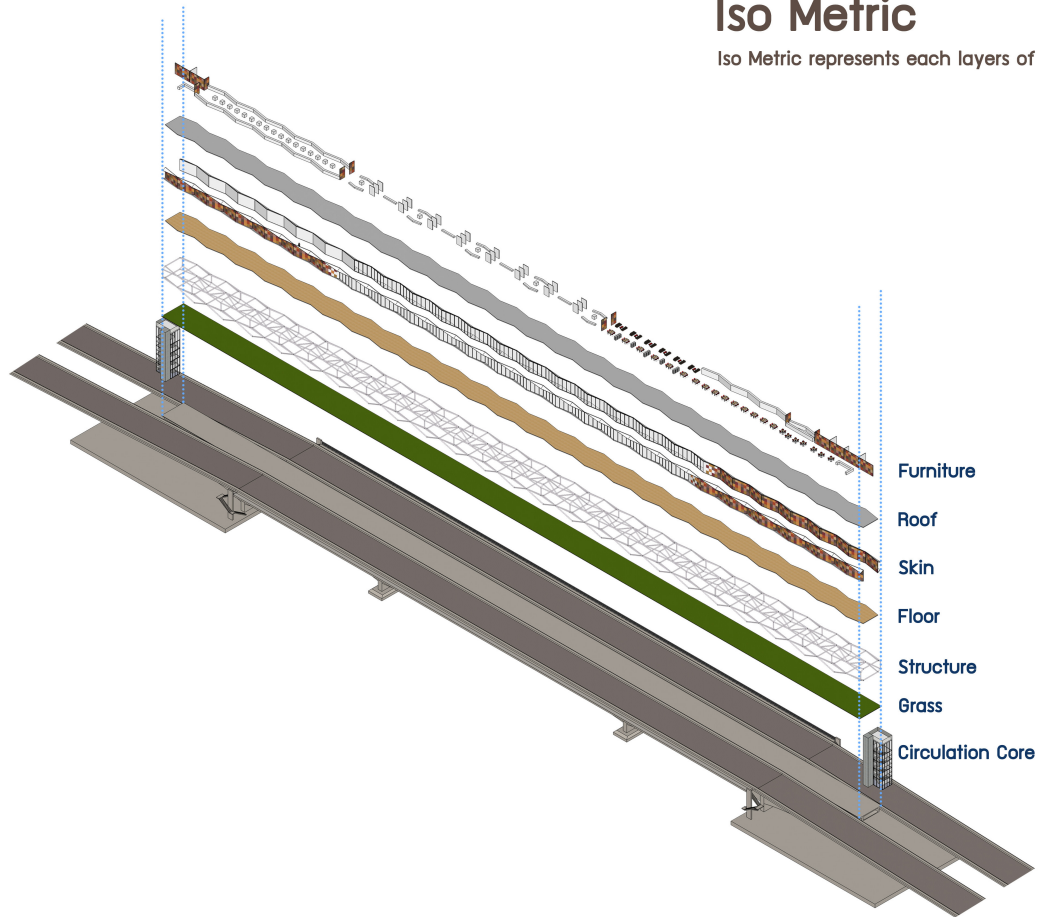


Elevation

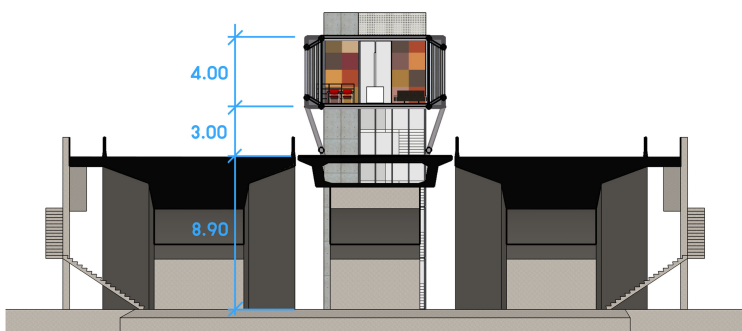


Iso Metric

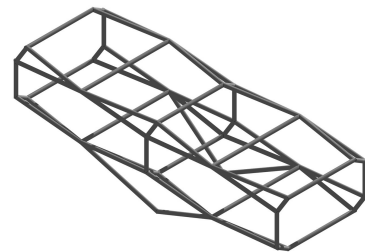
Iso Metric represents each layers of the building.



Section



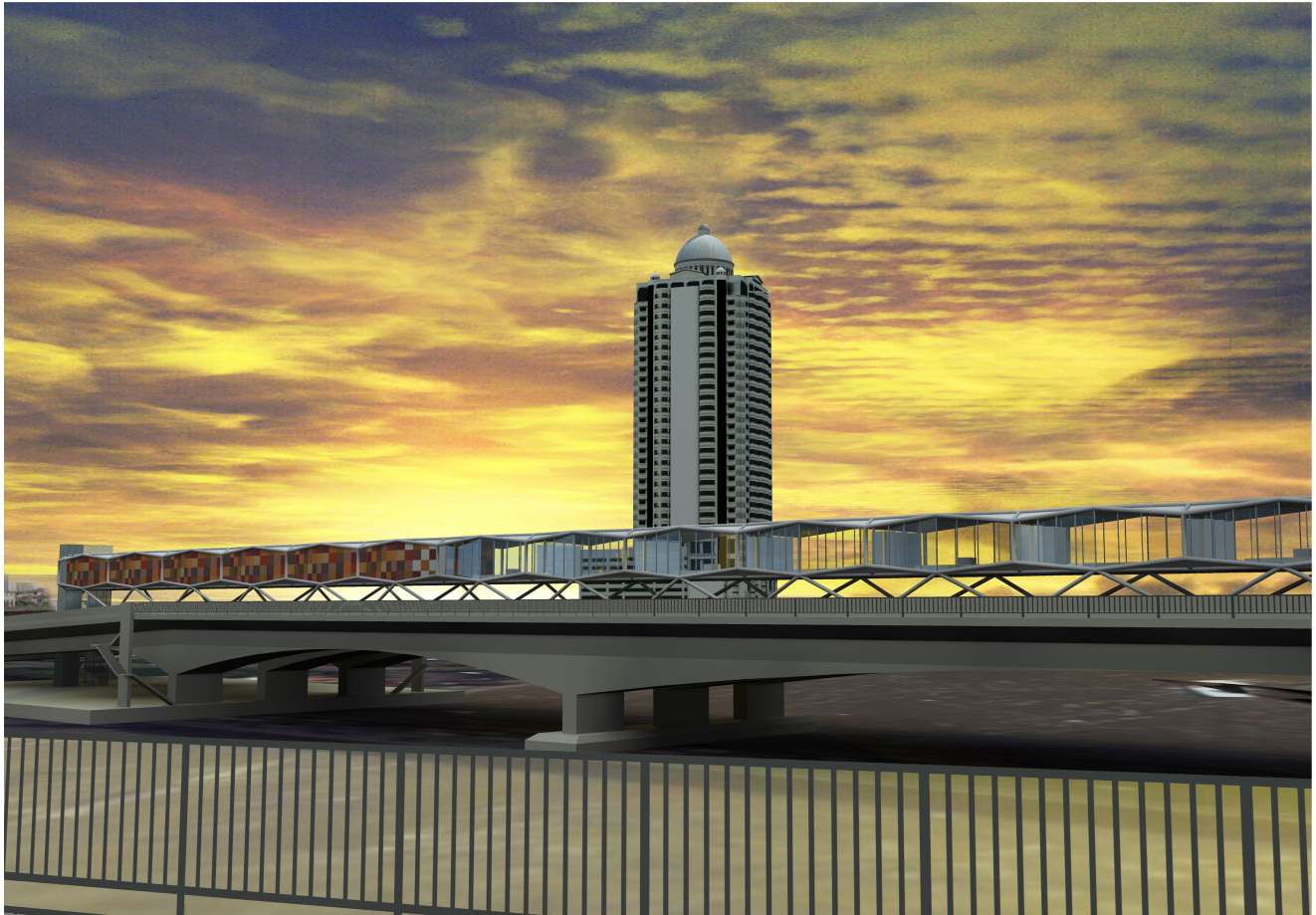
Structure



The picture shows two units of hexagon steel structure.
The dimension of one unit is 12 X 8 metres.



Chavanont Khosakitchalerit



Color Scheme

The idea is Thai painting floats over the river. Because the site is located in Rattanakosin Island, the historic center of Bangkok, the color design is used the color scheme of the mural painting at Wat Phra Kaew. Picking the color in the painting creates the harmonic scheme of Traditional Thai tone which is used to paint the outside and the inside wall of the building.

Nippon Paint Color Chip

- 5043D (Mansion Gold)
- 5053D (Hubbard Squash)
- 172R (Verona Gold)
- 223R (Glowing Ember)
- 132R (Aged Bronze)
- 151R (Expresso)
- 191R (Carriage Red)
- 4153D (Duxbury Wood)
- 4114T (Mauve Wood)
- 4052T (Natural Oak)

